



REFLECTION

ABU DHABI

CAPITAL LIVING ON REEM

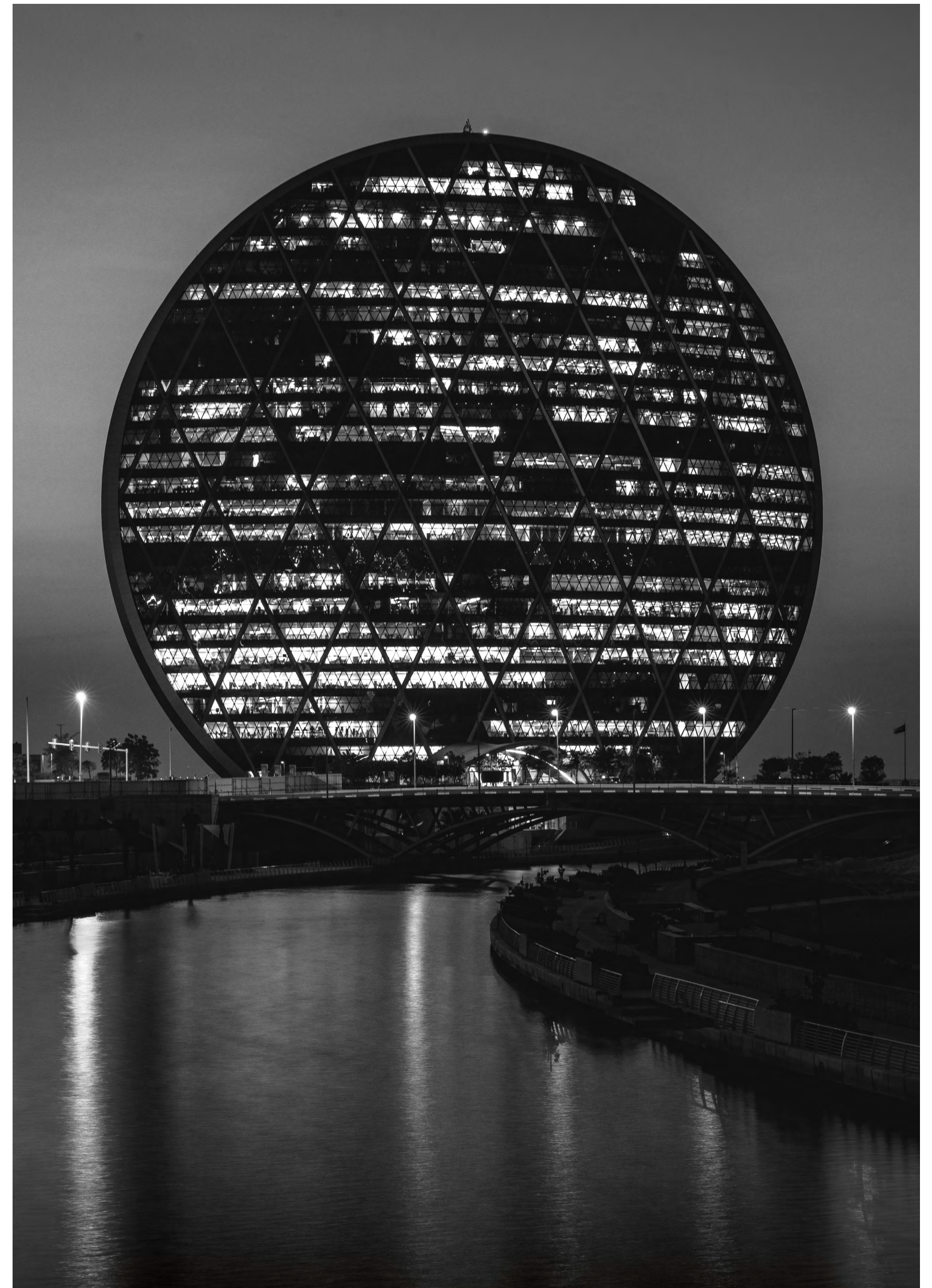
A grid of glass windows reflecting a sunset and city skyline. The sun is a bright, glowing orb in the upper center, casting a warm, golden light across the scene. The windows are arranged in a grid pattern, with dark frames separating the panes. The reflection of the city skyline is visible in the lower half of the grid, with several tall buildings silhouetted against the bright sky. The overall mood is warm and modern.

A B U D H A B I

The capital of the UAE has become home to people from all over the world who are drawn to its vibrant culture, natural beauty and dynamic business landscape. Proudly modern and powerfully progressive, in this cosmopolitan city, anything is possible.

A L D A R

We strive to shape an iconic skyline of communities where people love to live, in homes that brim with everything they love. Because as one of the most trusted and recognised real estate lifestyle developers in the UAE, it's our duty to make Abu Dhabi feel like home for everyone, every day.



CAPITAL LIVING ON REEM

Feel the rush of the city, in the new heart of the Capital. Charged with urban energy, Reem Island offers an exciting, always-on lifestyle, with restaurants, cafes, malls, beaches and endless experiences. The natural island is also neighbored by the cultural and financial centres of Saadiyat and Al Maryah Islands respectively, while being minutes from downtown Abu Dhabi.



REFLECTION I

REFLECTION II

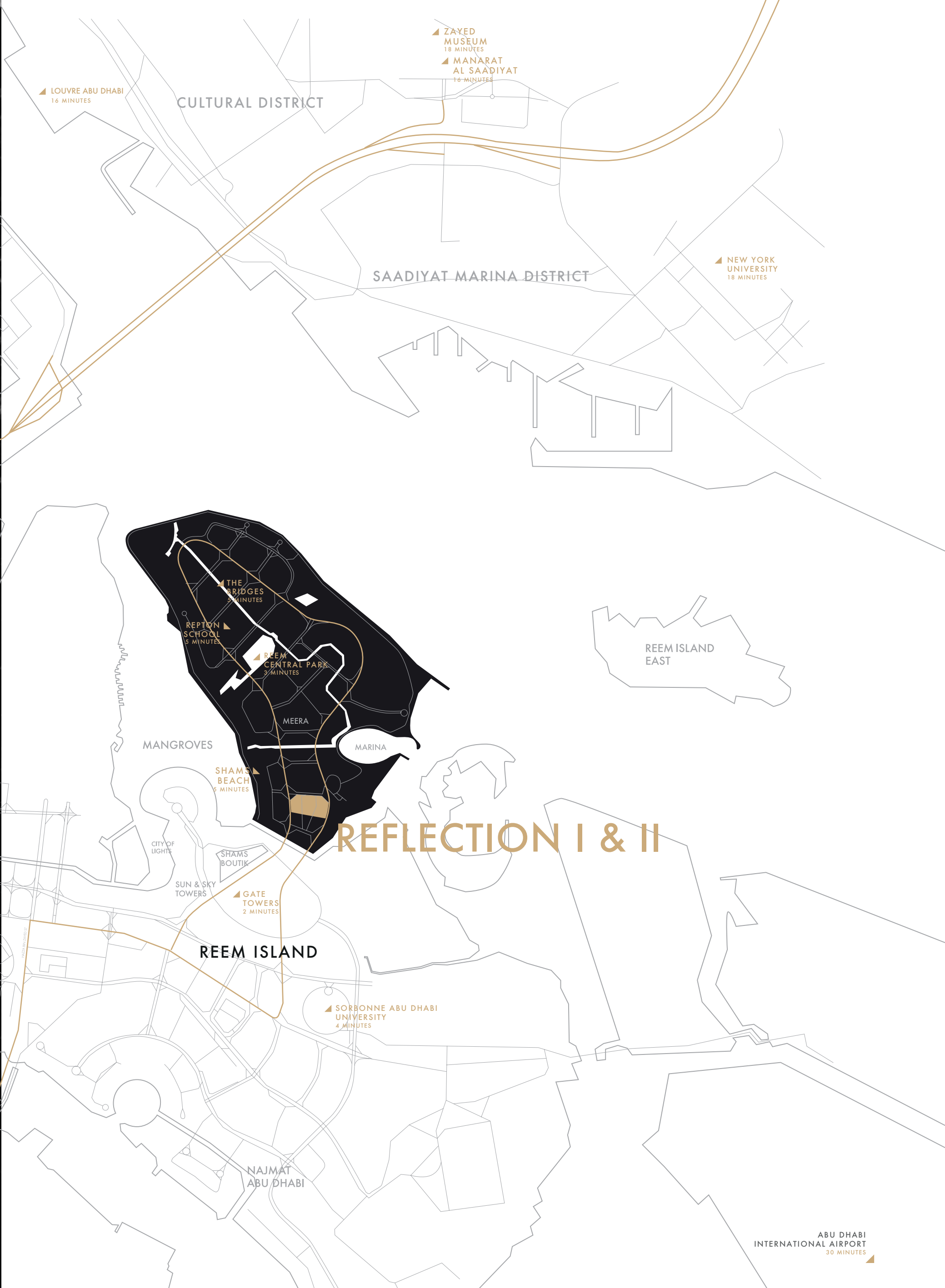




SEE
THE CITY
IN YOU

The city lights shine for you, in a destination with energy, ambition and spirit to match yours. Reflection II on buzzing Reem Island is one of two, mirror-image towers that make a bold statement on the skyline. From smart studios to sophisticated three-bed apartments, every home is designed with urban style and elegance, and a balcony that looks out over sea, mangroves or city.

BUILT WITH CHARACTER



Together, Reflection Towers I and II consist of 374 stylish apartments, each offering a unique view of Reem Island.



Modern homes for the modern resident – every apartment is designed with smart fixtures and elegant finishings to mirror a cosmopolitan lifestyle.





At podium level, you'll find a family-friendly pool, relaxing yoga deck, kids play area and other luxury amenities. All set against the vibrant cityscape.

Between the two towers, a landscaped park sets the scene for picnics, barbecues and outdoor fitness.





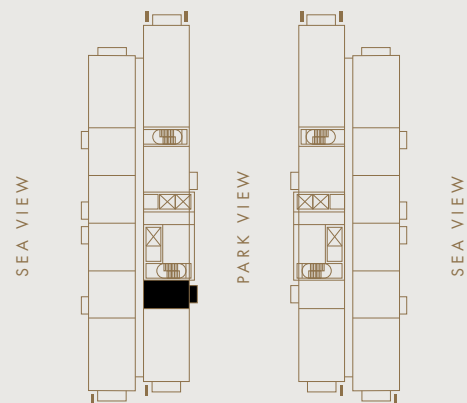
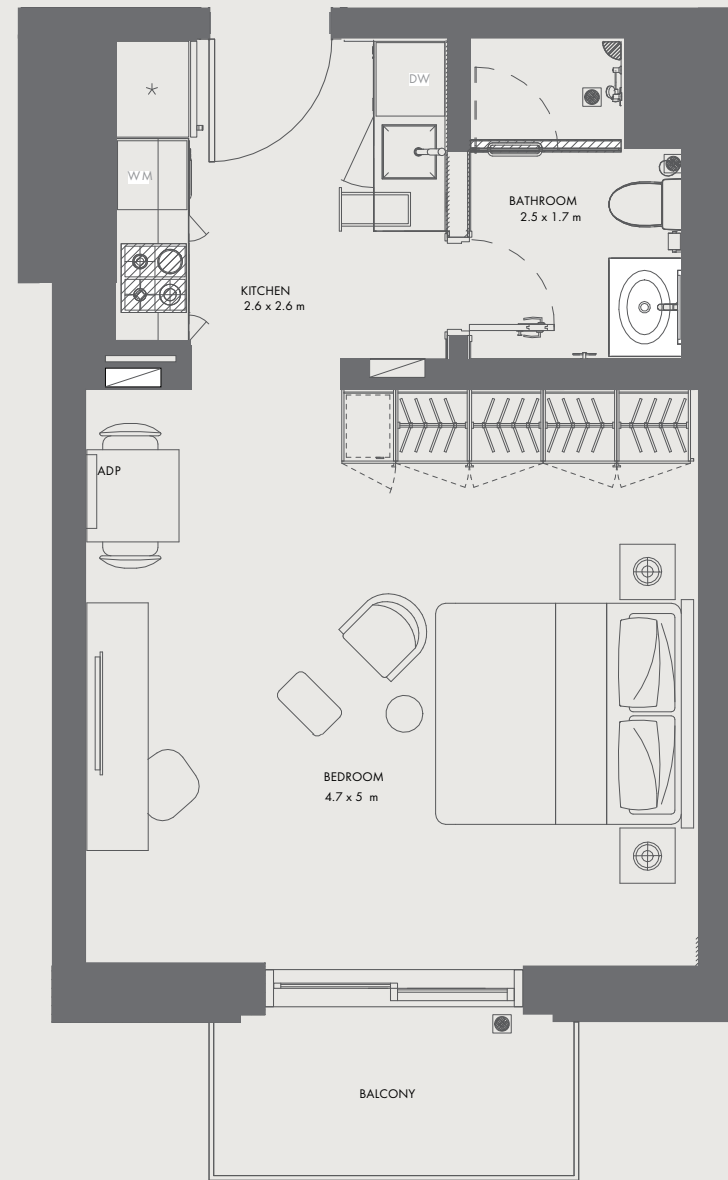
Each tower offers a state-of-the-art gym,
with common areas for cooling off or
socializing with neighbours.



STUDIO TYPE

S1

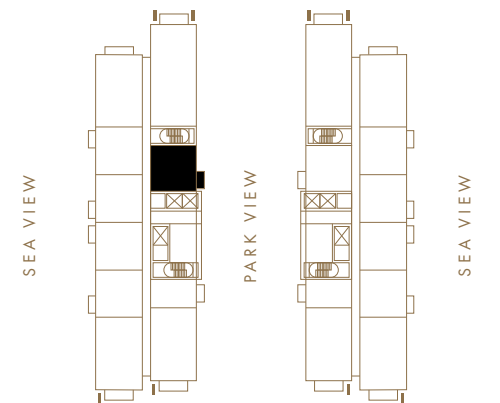
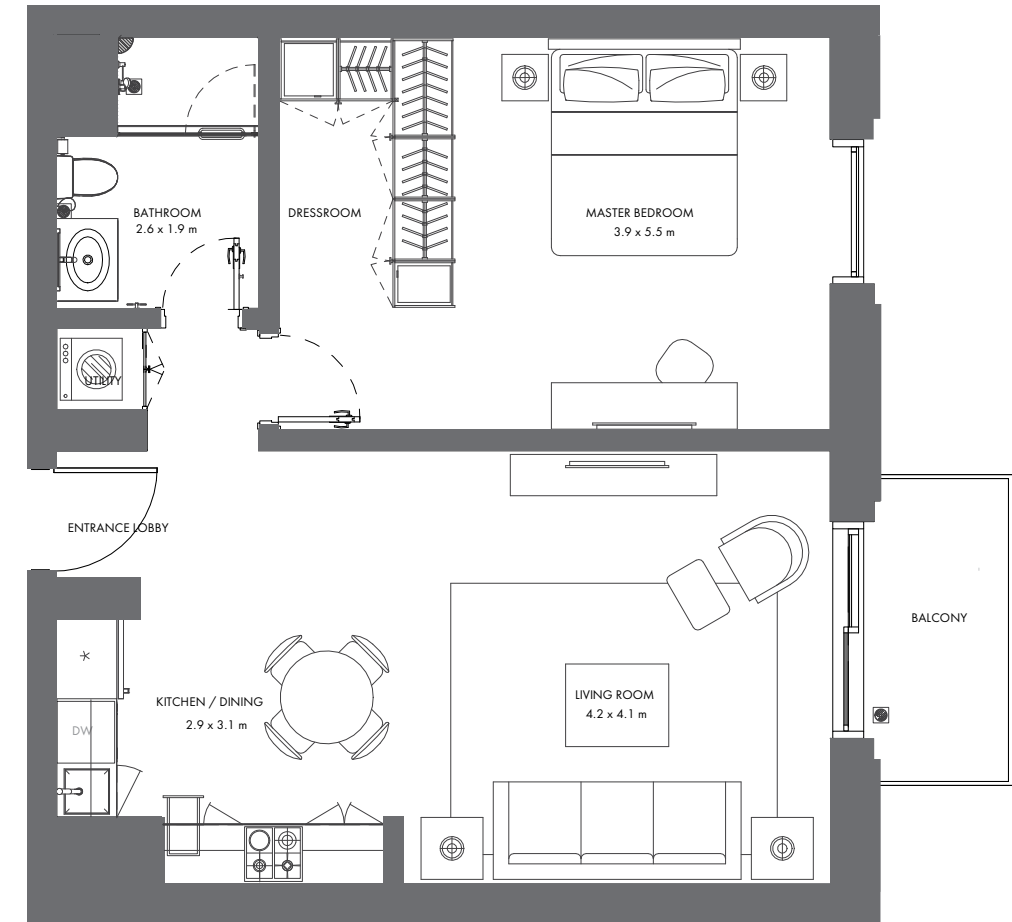
— Apartment area : 37.06 m²
Balcony area : 4.48 m²



APARTMENT TYPE

1B1

— Apartment area : 61.77 m²
Balcony area : 4.48 m²

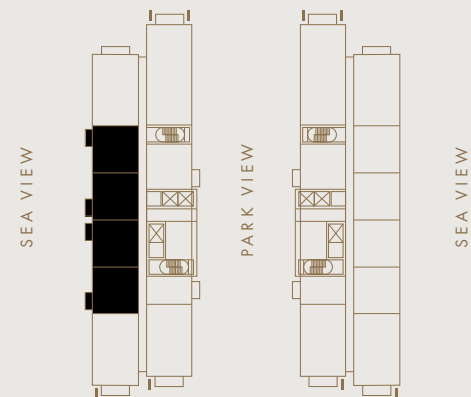
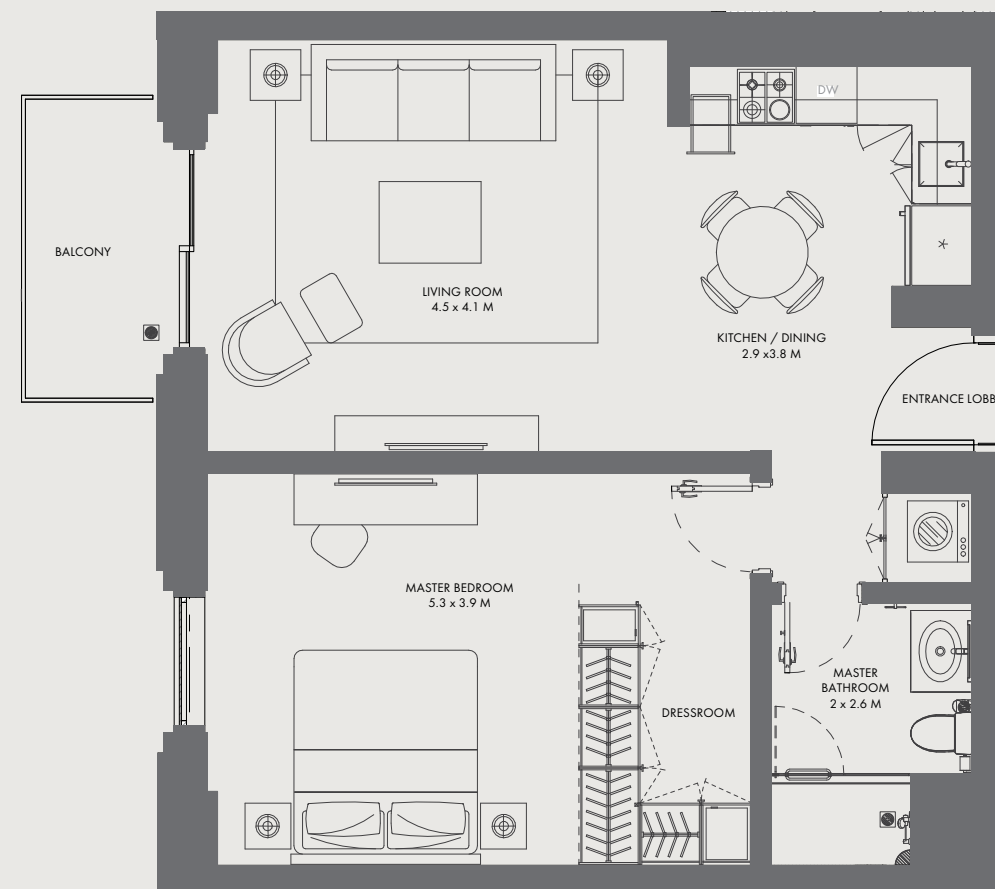


Disclaimer: This plan is reproduced for illustrative purposes as an example of unit layouts and Aldar makes no representation of warranty in relation to any of the information shown. Unit sizes and layouts will vary depending on the location and the masterplan for each building and unit type.

APARTMENT TYPE

1B2

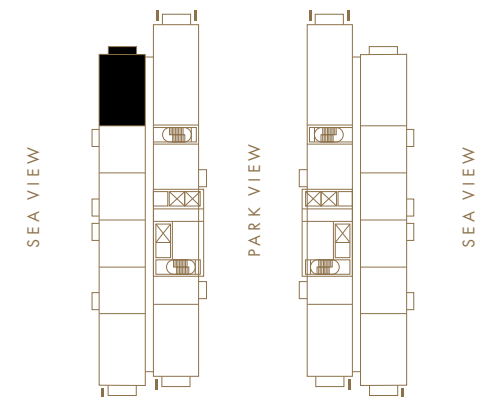
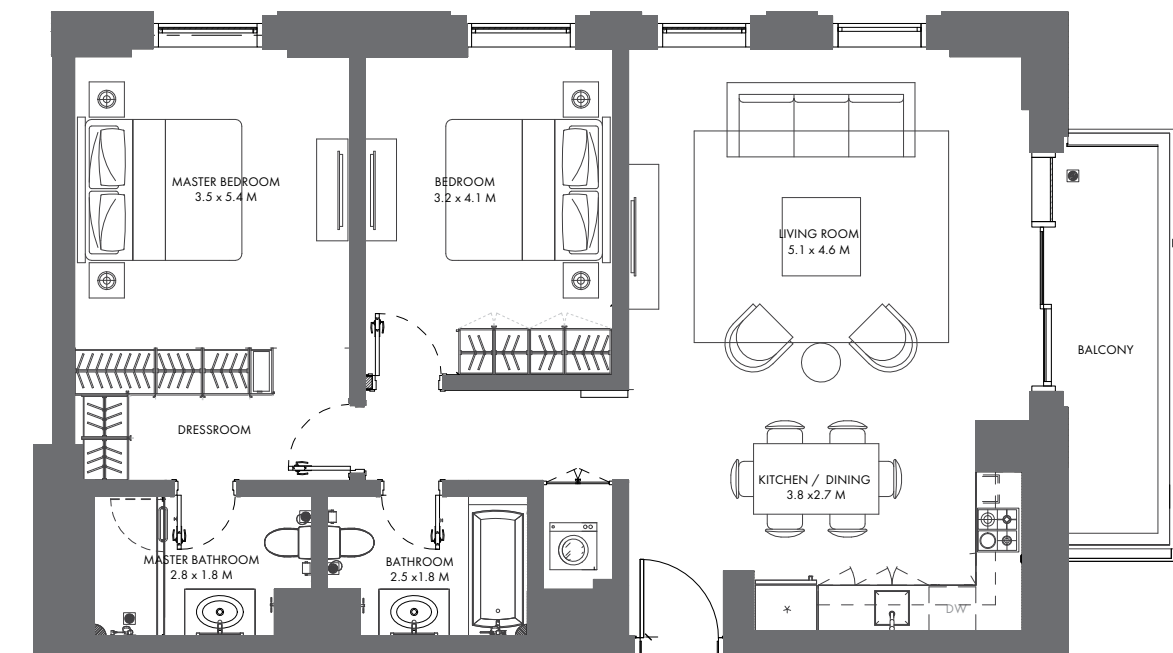
— Apartment area : 60.83 m²
Balcony area : 4.48 m²



APARTMENT TYPE

2B1

— Apartment area : 91.64 m²
Balcony area : 7.53 m²

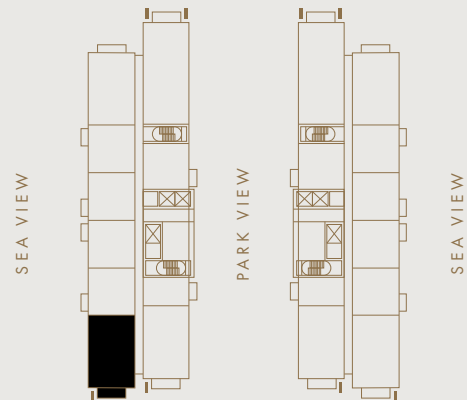
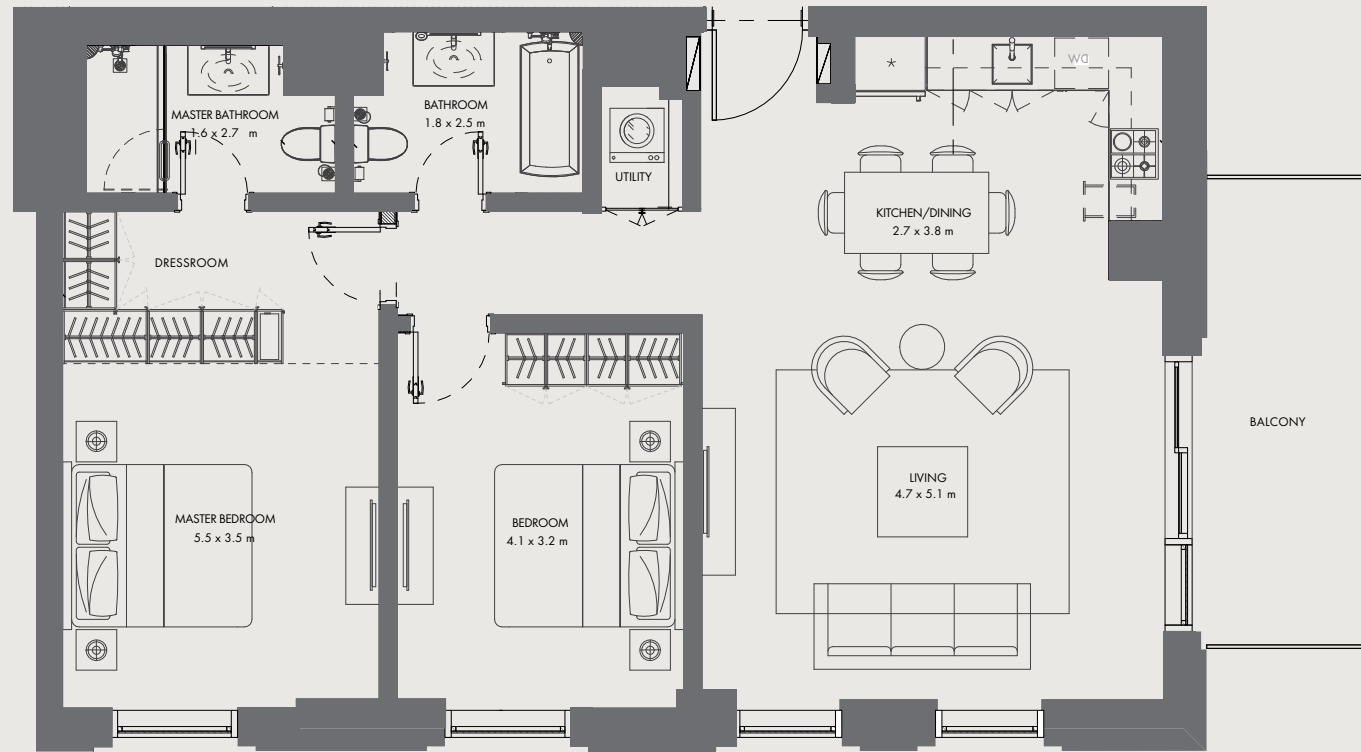


Disclaimer: This plan is reproduced for illustrative purposes as an example of unit layouts and Aldar makes no representation of warranty in relation to any of the information shown. Unit sizes and layouts will vary depending on the location and the masterplan for each building and unit type.

APARTMENT
TYPE

2B1.1

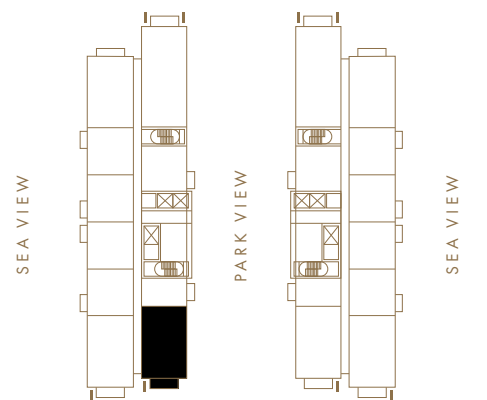
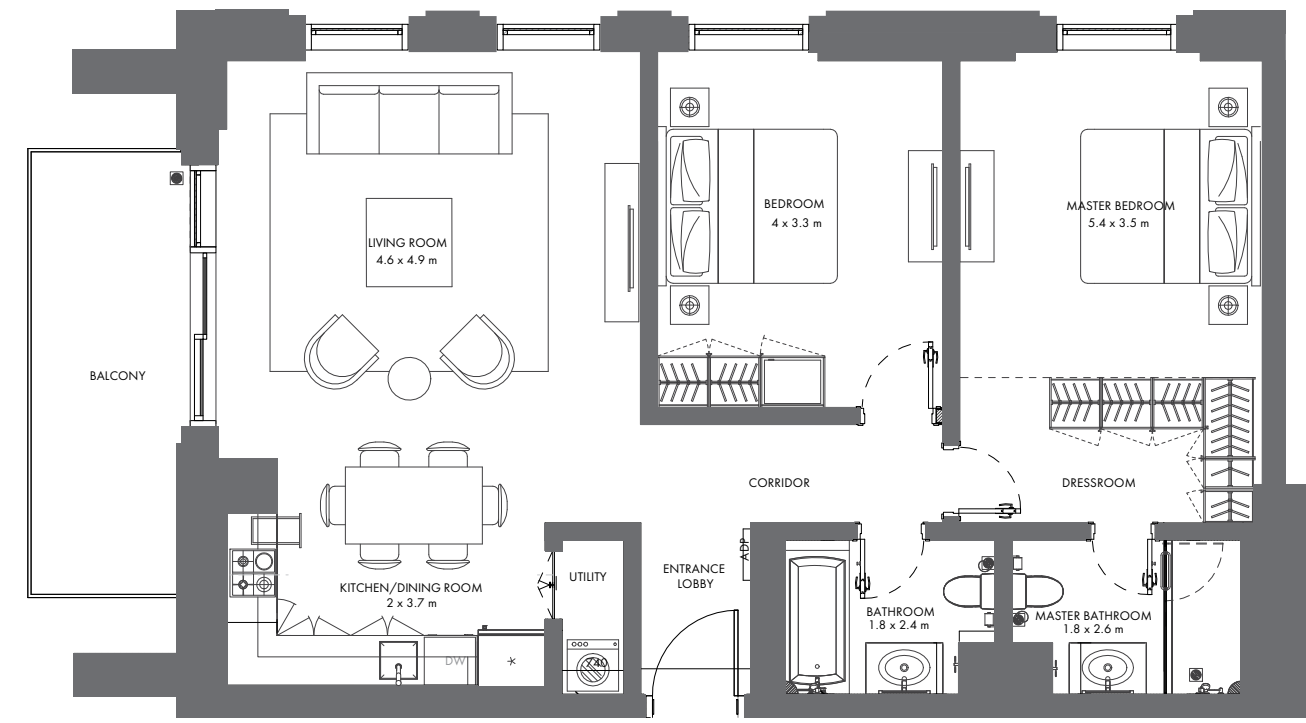
— Apartment area : 91.35 m²
Balcony area : 10.16 m²



APARTMENT
TYPE

2B2

— Apartment area : 91.96 m²
Balcony area : 10.16 m²

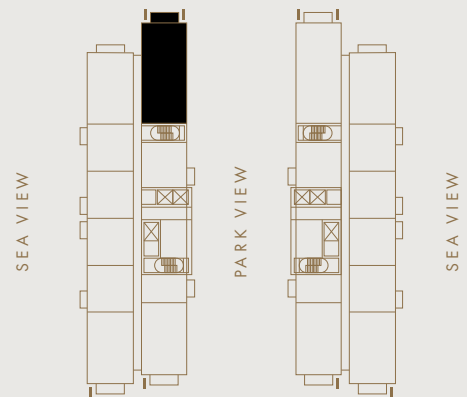
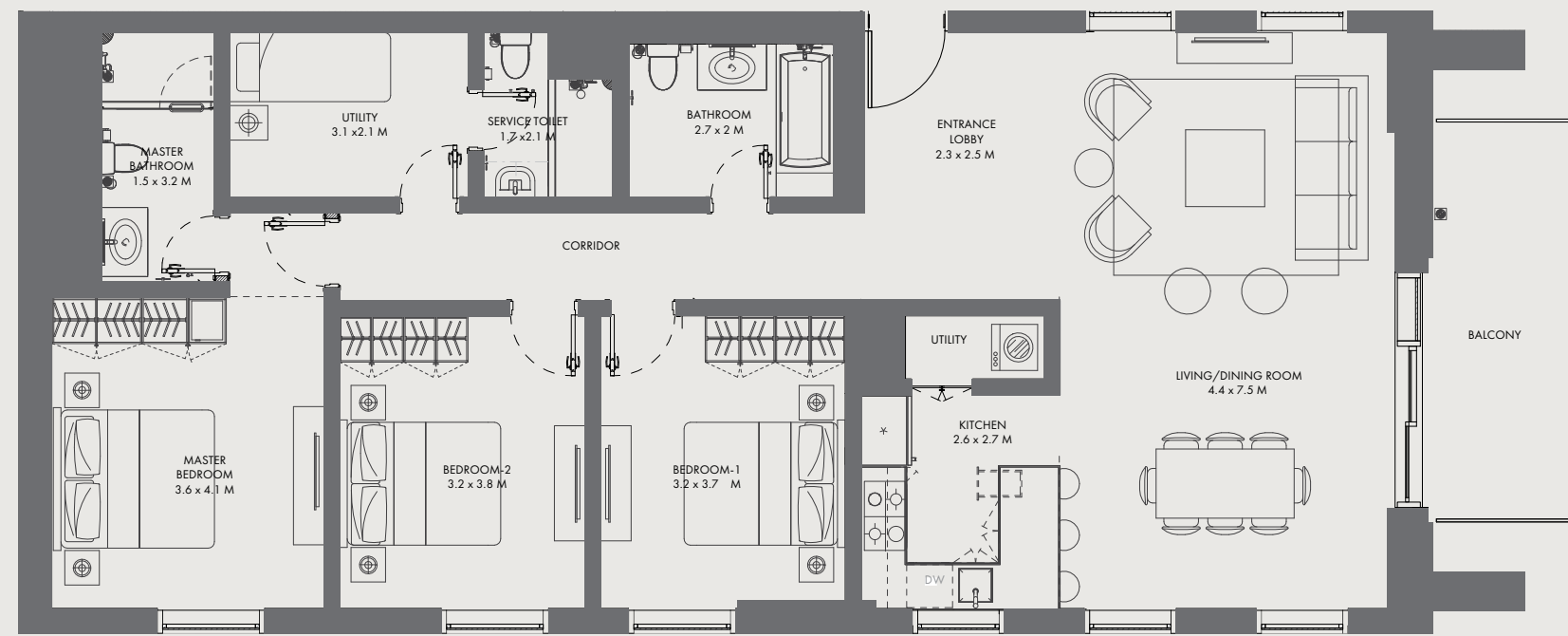


Disclaimer: This plan is reproduced for illustrative purposes as an example of unit layouts and Aldar makes no representation of warranty in relation to any of the information shown. Unit sizes and layouts will vary depending on the location and the masterplan for each building and unit type.

APARTMENT TYPE

3B1

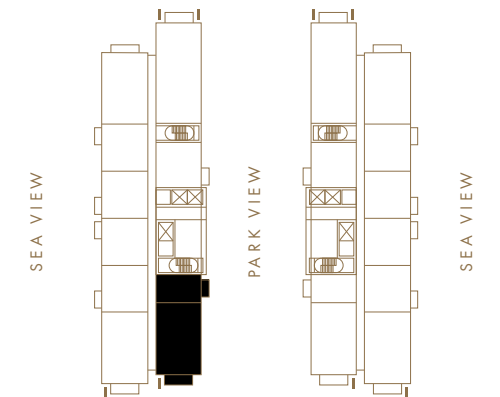
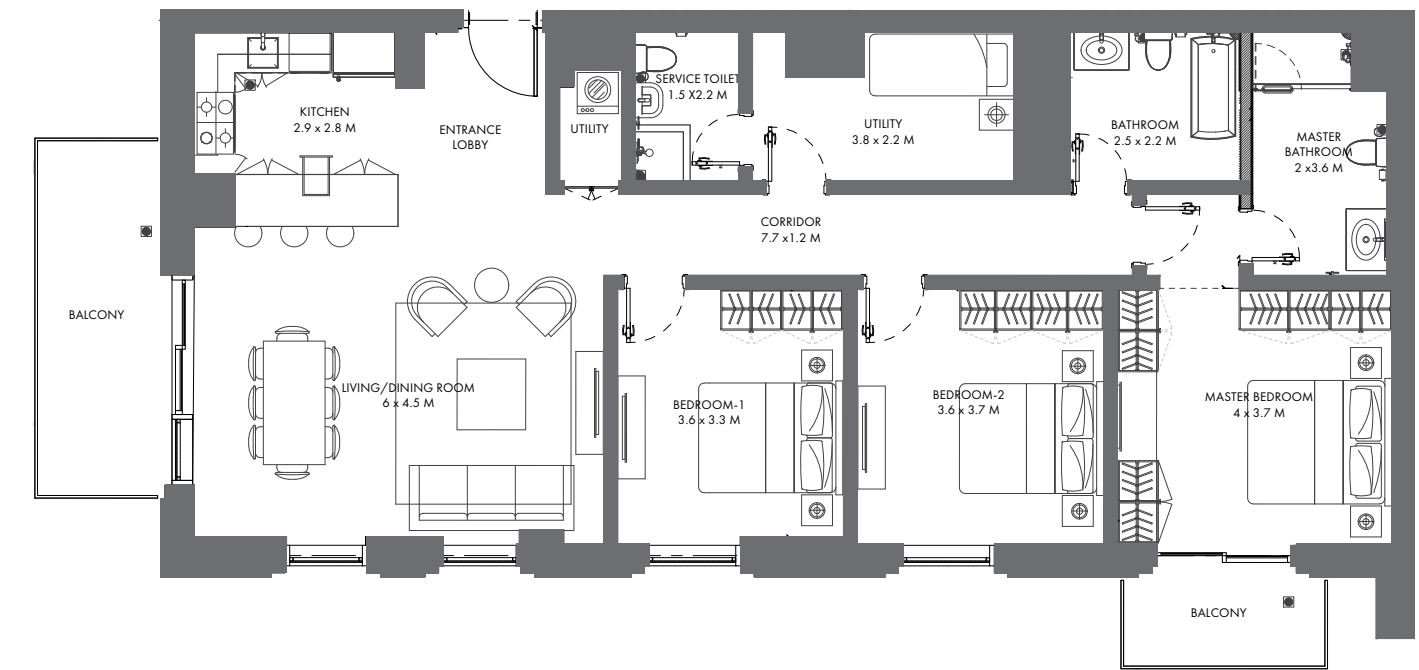
— Apartment area : 130.50 m²
Balcony area : 10.16 m²



APARTMENT TYPE

3B2

— Apartment area : 129.41 m²
Balcony area : 10.16 m²



Disclaimer: This plan is reproduced for illustrative purposes as an example of unit layouts and Aldar makes no representation of warranty in relation to any of the information shown. Unit sizes and layouts will vary depending on the location and the masterplan for each building and unit type.

CITY LIVING

Between the two towers, a landscaped park sets the scene for picnics, barbecues and outdoor fitness. The park will also be overlooked by a café, convenience store and other amenities. Just a short walk away are Gate Towers, Shams Boutik, the beach and Reem Central Park.

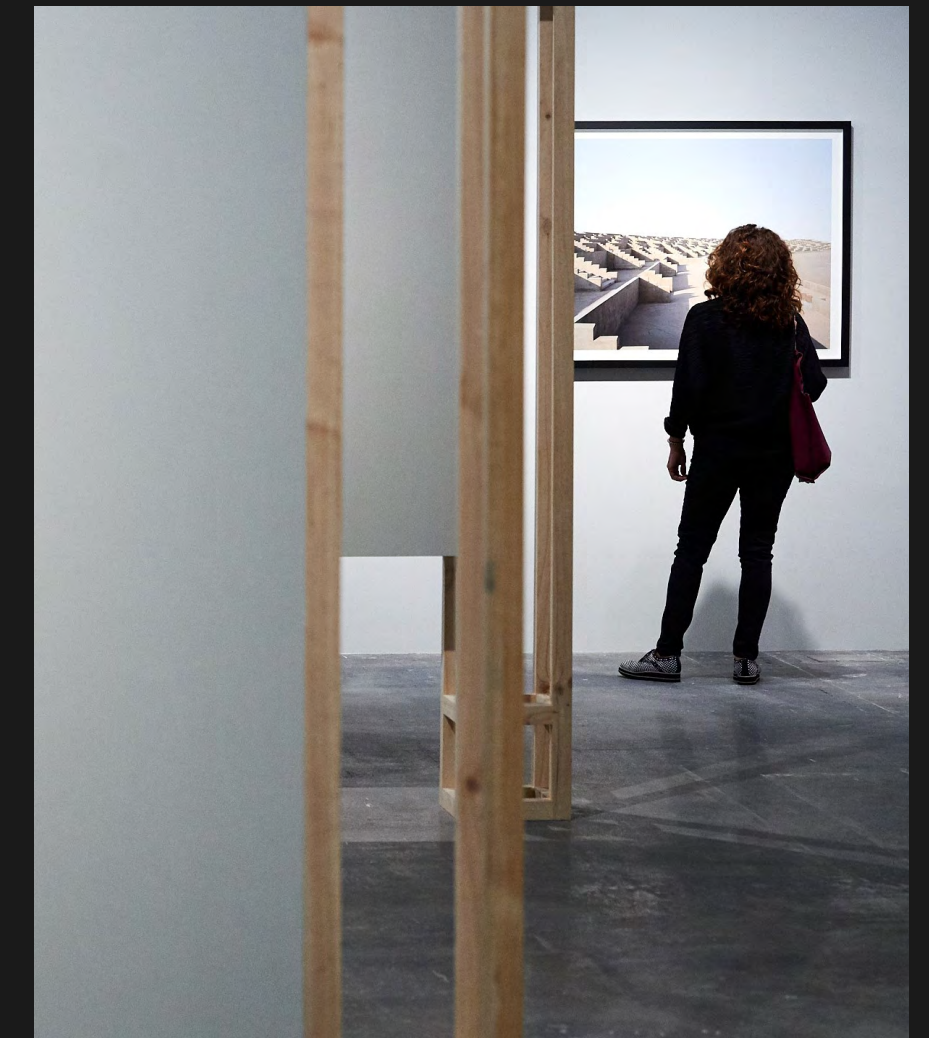


The Gate & Arc Towers is an iconic, mixed-use development. Featuring a wide range of shops, cafés and restaurants, this impressive development offers the best in city living.



LOUVRE ABU DHABI

Saadiyat Island - The first museum of its kind in the Arab world. Walk beneath 8,000 metal stars, and see shared stories of humanity in a whole new light.



WAREHOUSE 421

Mina Zayed, Next to Mina Centre - The official hangout for Abu Dhabi's creative community. Enjoy the seasonal events or simply admire the art on display.



REEM ISLAND PARKS

Reem Central Park, Al Fay Park and Gateway Park on Yas – there are plenty of ways to escape the hustle and bustle of city life. These contemporary parks put leisure in your backyard and offer something for everyone – including gardens, a skate park, an adventure trail, sports courts, fitness spots, a beach and a selection of restaurants. This isn't just where the capital comes together, it's the space where the city reinvents itself.



BEACH WALK

Reem Central Park & Beach

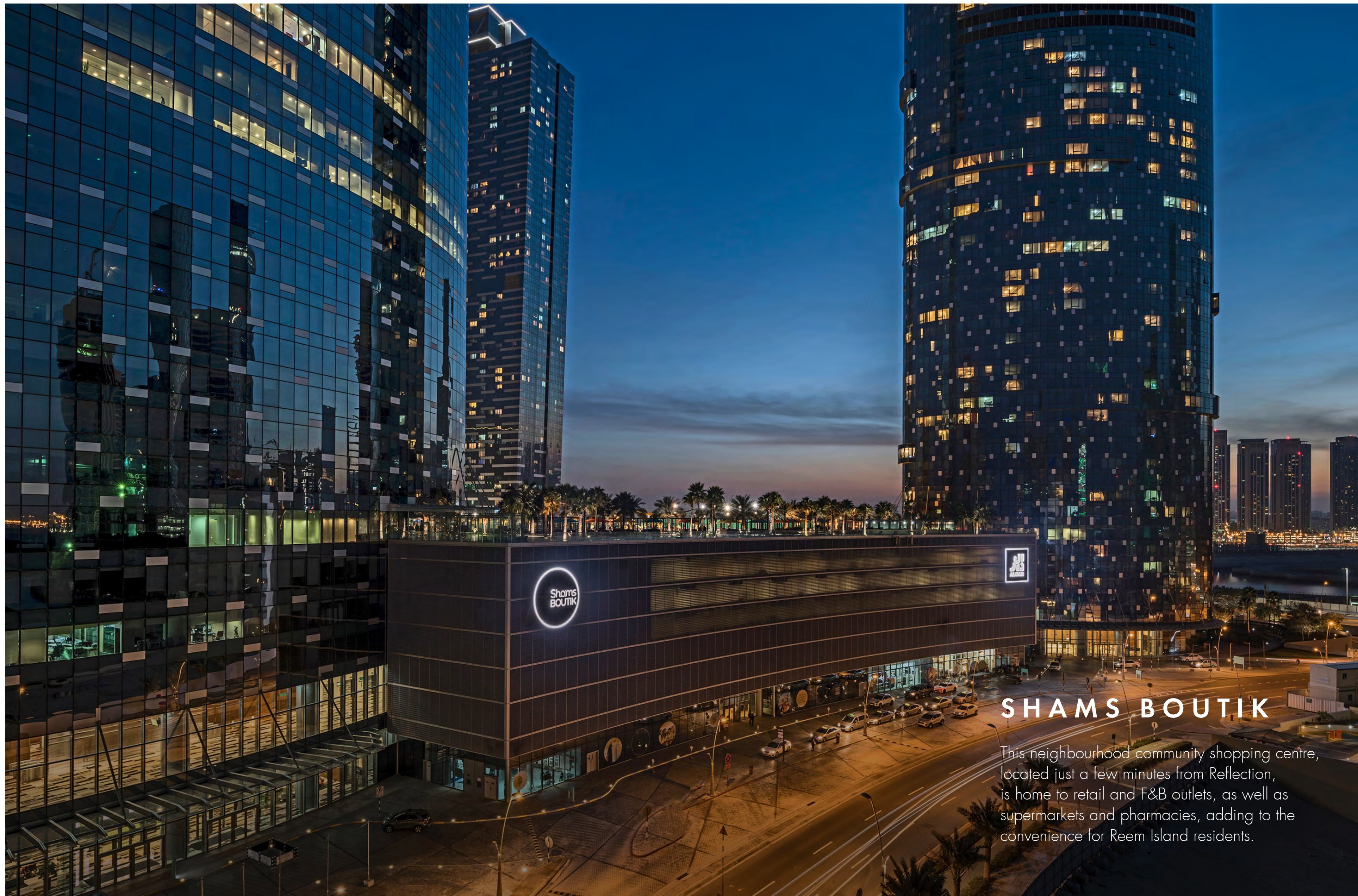
The urban park gives way to a stretch of golden sand along the water. Bring your bucket, spade and paddle board.

COVE BEACH

Makers District, Reem Island

Nestled between the sea and city, this chilled beach oasis turns things up a notch after sunset.





SHAMS BOUTIK

This neighbourhood community shopping centre, located just a few minutes from Reflection, is home to retail and F&B outlets, as well as supermarkets and pharmacies, adding to the convenience for Reem Island residents.



800 ALDAR
ALDAR.COM